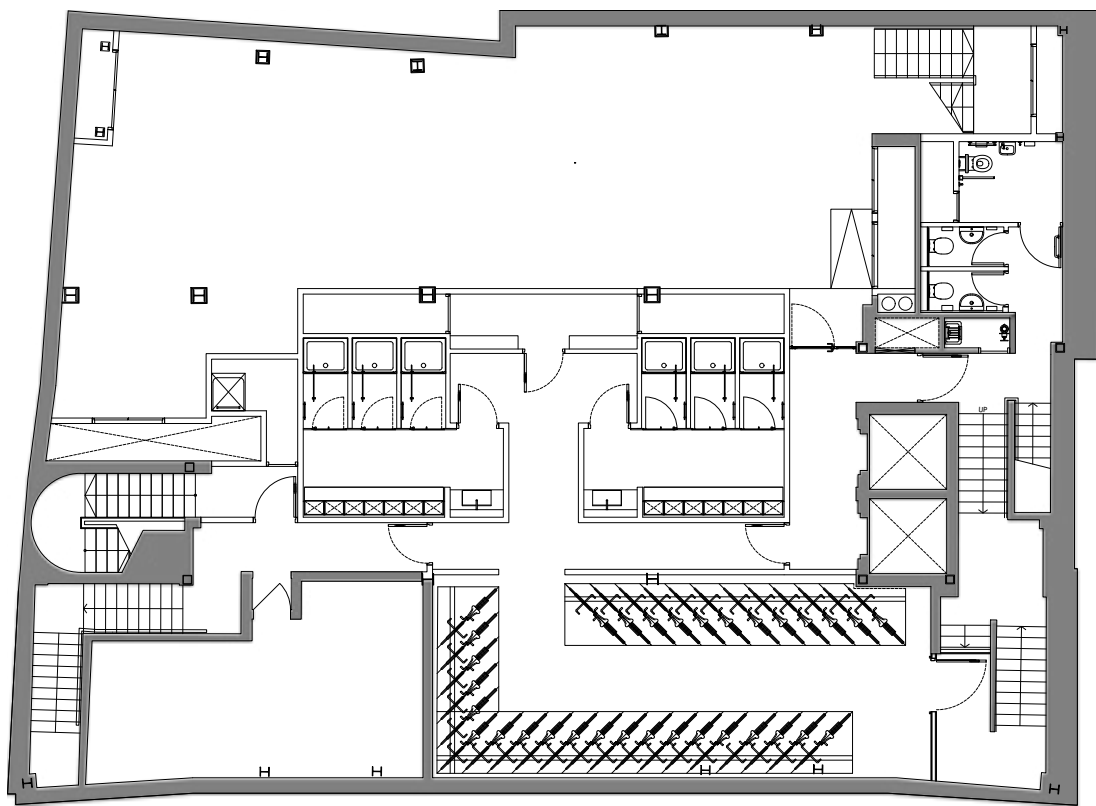

Floor Plans

Five.
Norwich
Street

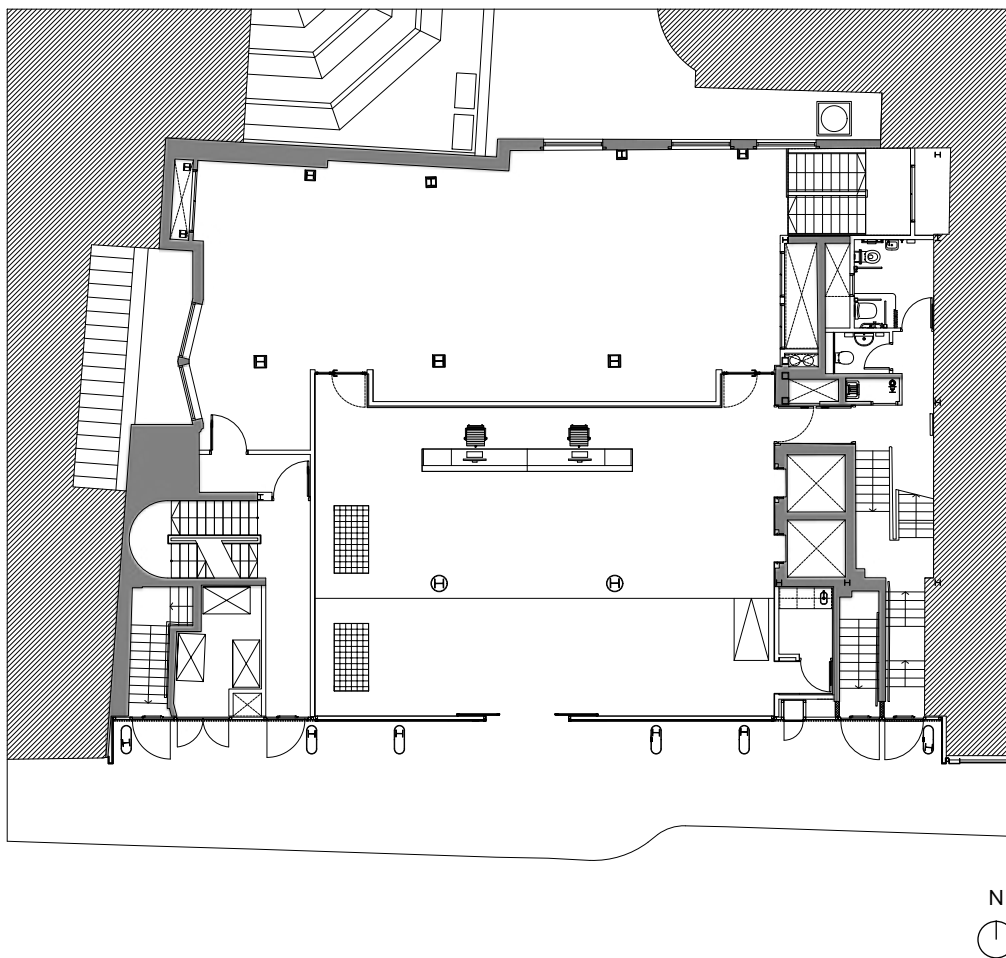
Lower Ground

1,158 sq ft (107.6 sq m)



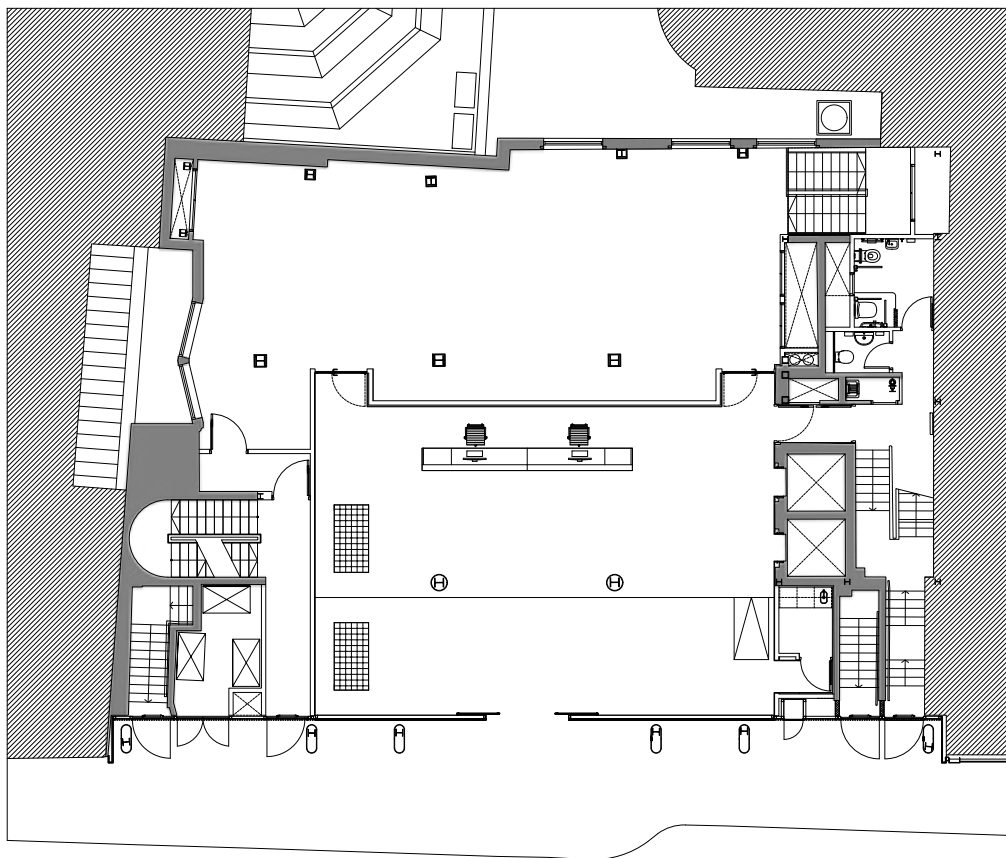
Ground Reception

1,354 sq ft (126 sq m)



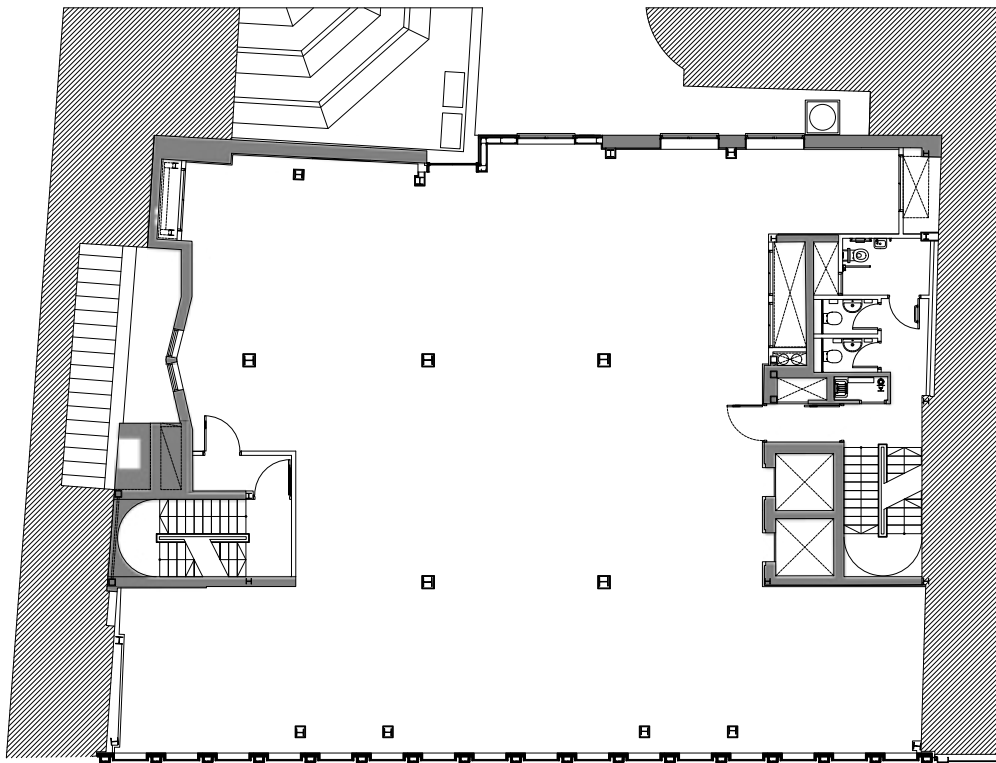
Ground Offices

1,291 sq ft (119.9 sq m)



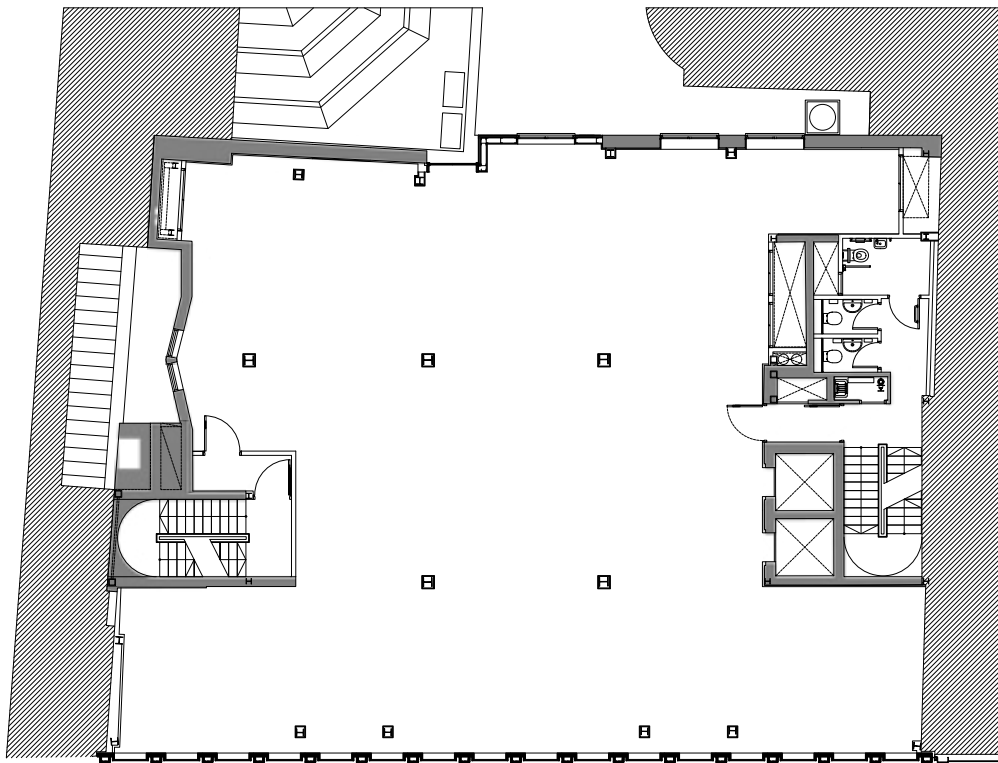
First Floor

3,410 sq ft (316.8 sq m)



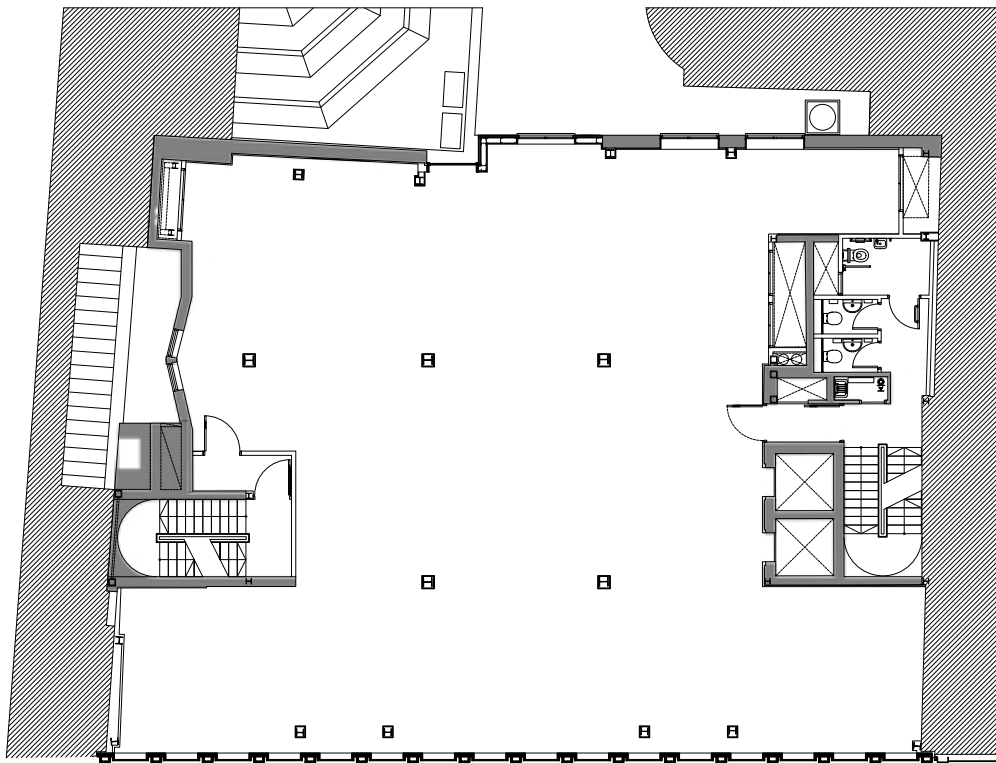
Second Floor

3,432 sq ft (318.8 sq m)



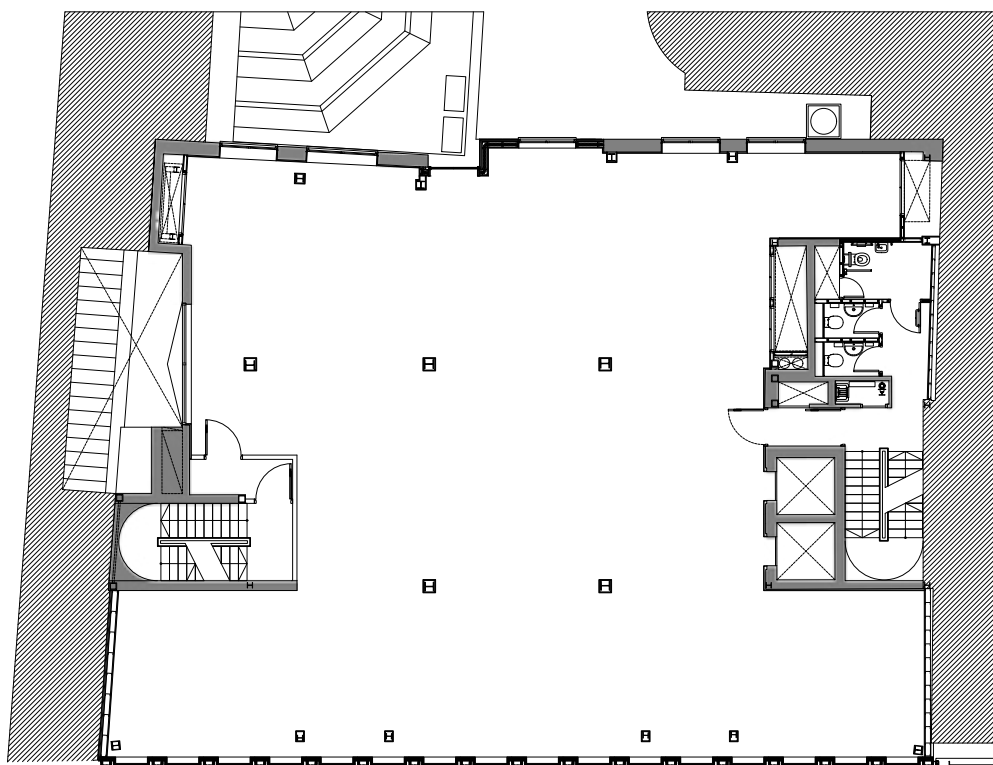
Third Floor

3,425 sq ft (318.2 sq m)



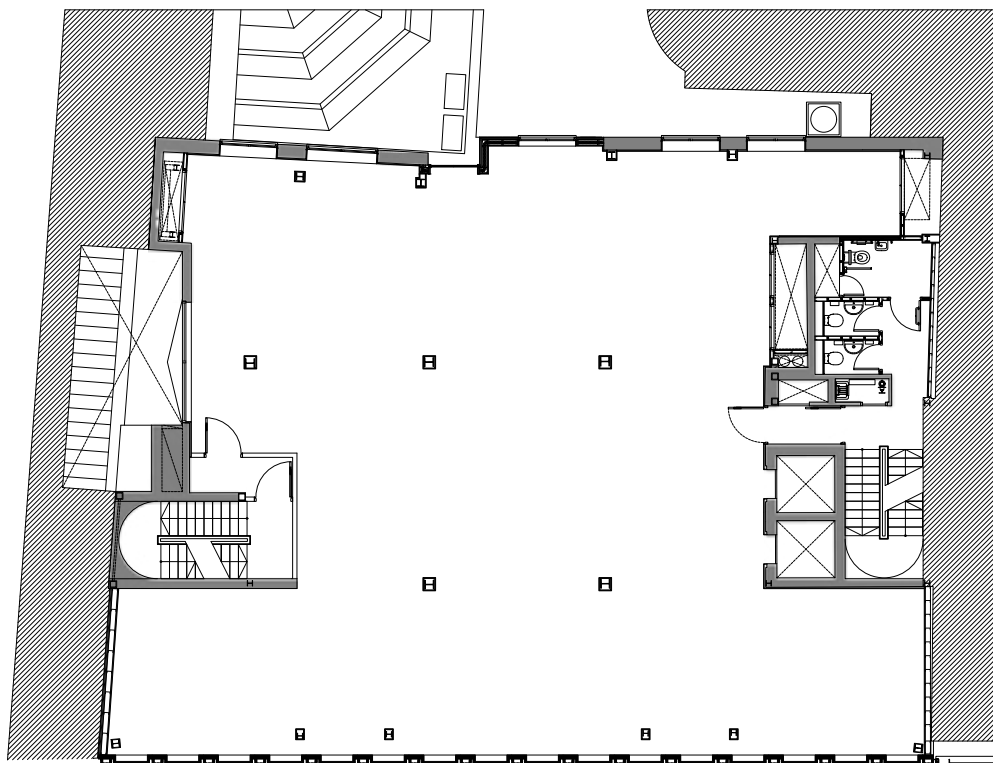
Fourth Floor

3,437 sq ft (319.3 sq m)



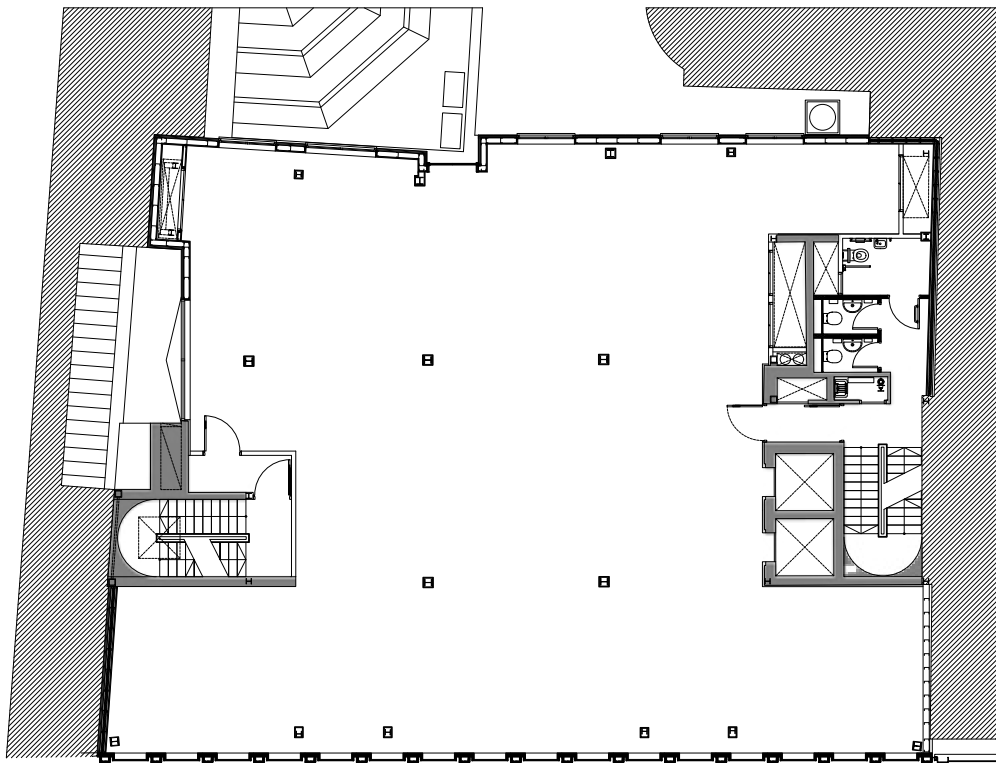
Fifth Floor

3,436 sq ft (319.2 sq m)



Sixth Floor

3,469 sq ft (322.3 sq m)



Seventh Floor

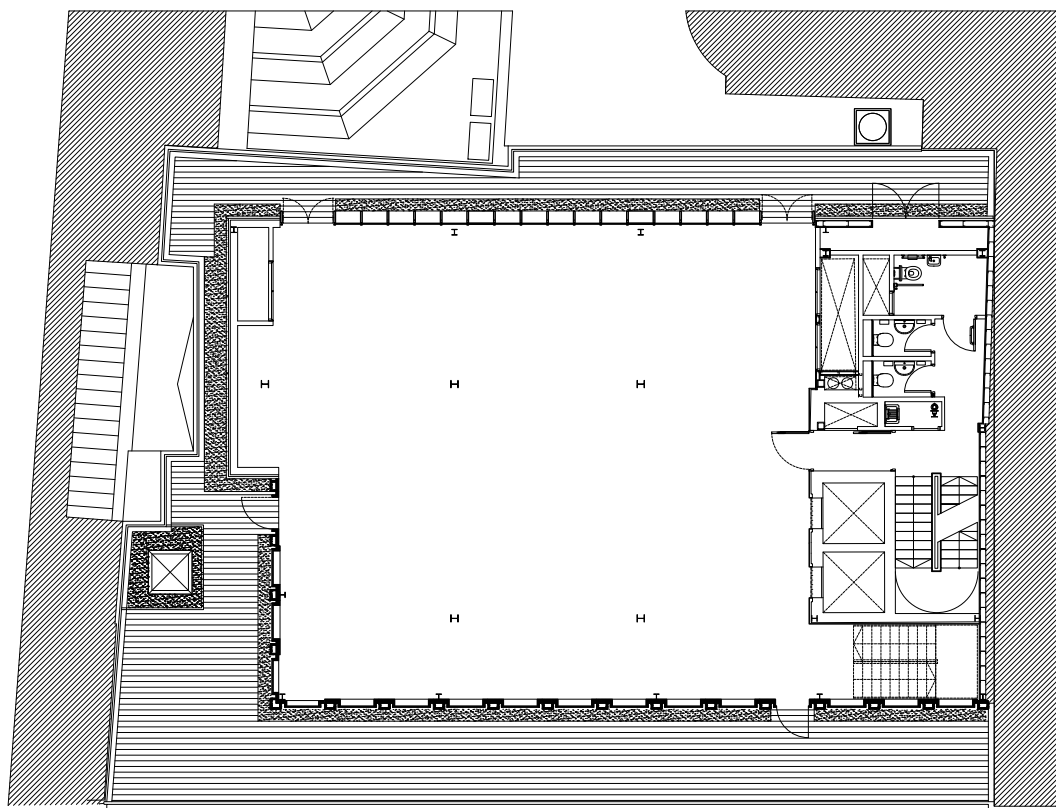
2,236 sq ft (207.7 sq m)

Front Terrace

784 sq ft (73 sq m)

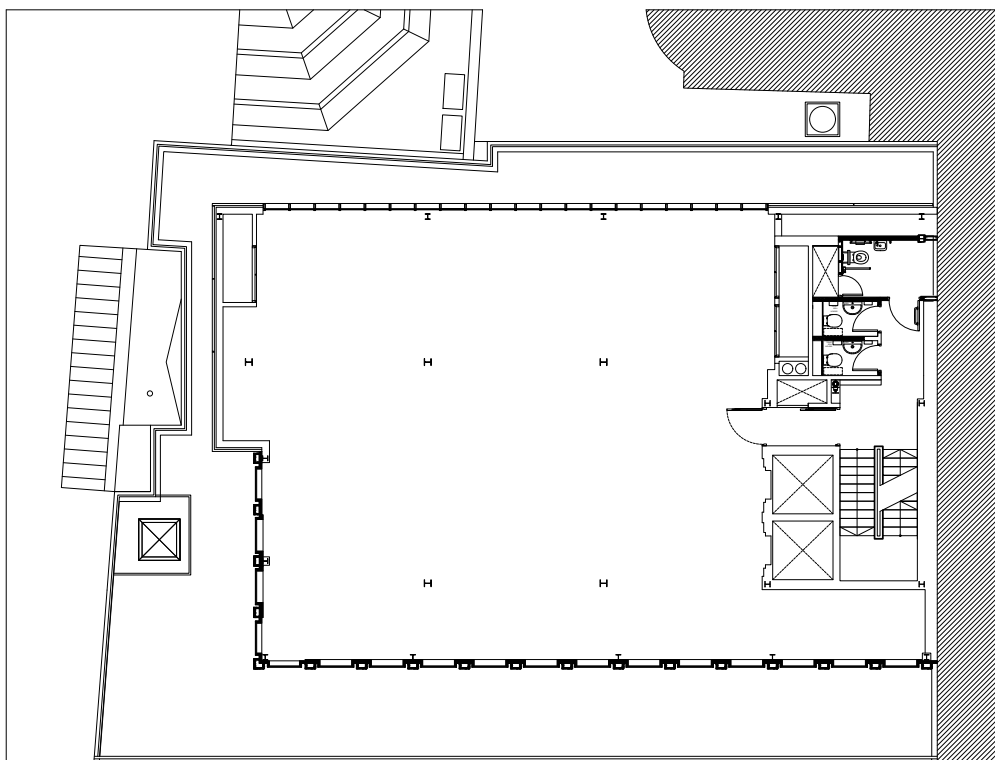
Rear Terrace

353 sq ft (33 sq m)



Eighth Floor

2,226 sq ft (206.8 sq m)



www.fivenorwichstreet.com