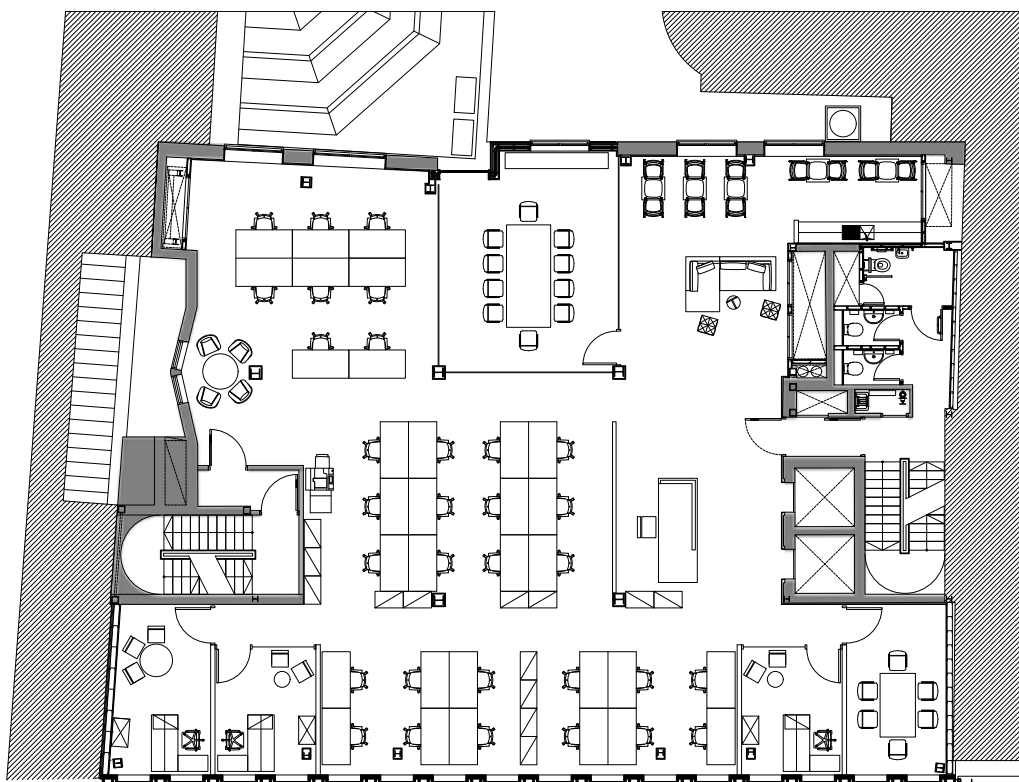

Space Plans

Five.
Norwich
Street

Indicative Space Plan

Second Floor

3,432 sq ft (318.8 sq m)

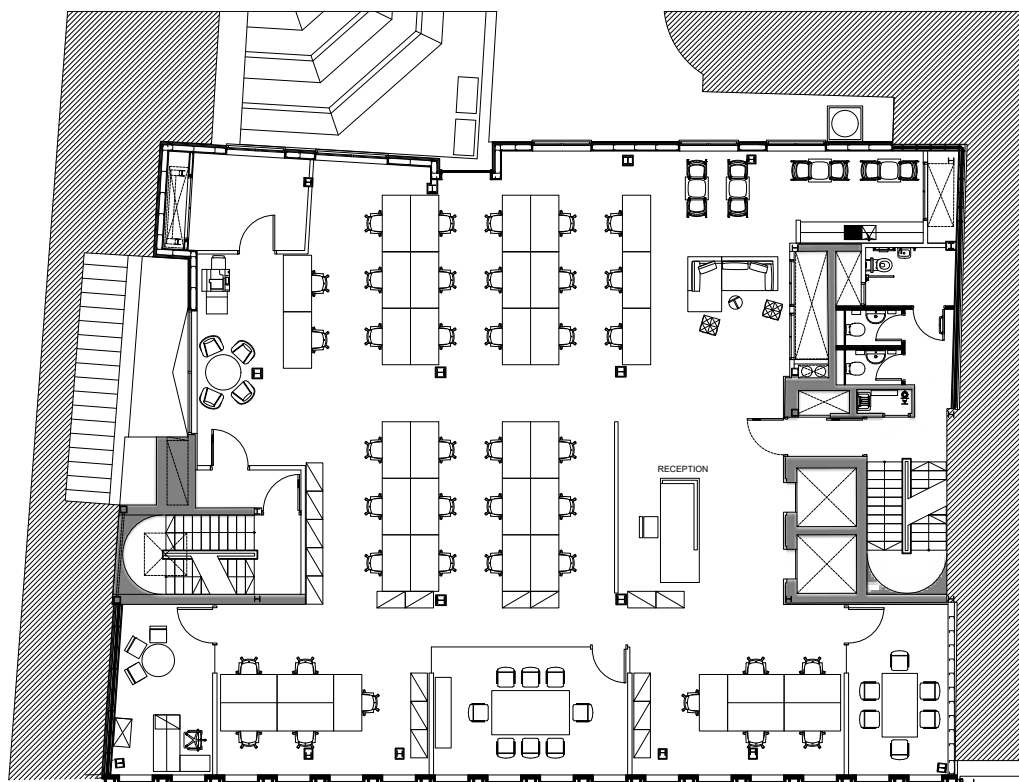


- 3 x 1 person office
- 1 x 6 person office
- 1 x 10 person office
- 1 x Open plan office for 32 people

Indicative Space Plan

Sixth Floor

3,469 sq ft (322.3 sq m)



- 1 x 1 person office
- 1 x 6 person office
- 1 x 8 person office
- 1 x Open plan office for 39 people

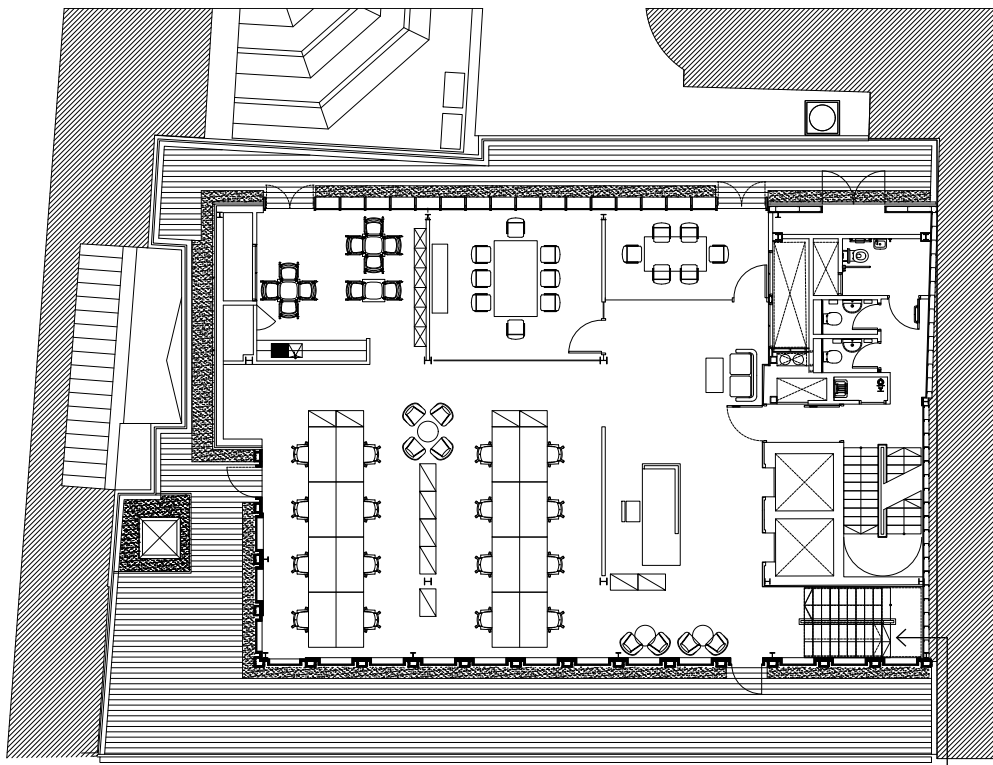
Indicative Space Plan

Seventh Floor

2,236 sq ft (207.7 sq m)

Front Terrace
784 sq ft (73 sq m)

Rear Terrace
353 sq ft (33 sq m)



INDICATIVE SOFT SPOT

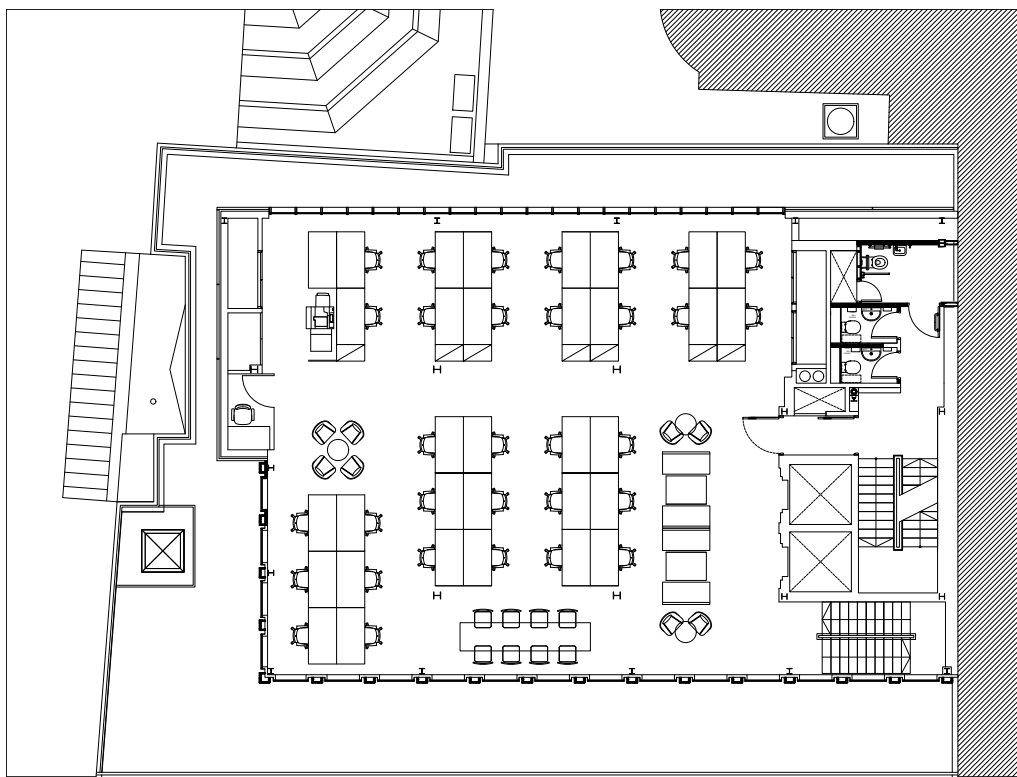


- 1 x 6 person office
- 1 x 8 person office
- 1 x Open plan office for 16 people

Indicative Space Plan

Eighth Floor

2,226 sq ft (206.8 sq m)



- 1 x Open plan office for 32 people

www.fivenorwichstreet.com